

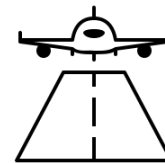




2 MIN.
du tramway
& du métro



10 MIN.
de la gare
Saint Charles



25 MIN.
de l'aéroport
Marseille Provence

Le Mercure Marseille Centre Vieux Port est situé au cœur de la ville, à deux pas du quartier historique et du Vieux Port.

COMMENT VENIR A NOUS?

VIEUX PORT



QUARTIER DU PANIER



DOCKS VILLAGE



CALANQUES



LA DESTINATION

WORLD TRADE CENTER



CINEMA EUROPACORP



MUCEM



ROOFTOP R2



LA DESTINATION



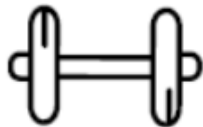
200 chambres
Incluant 68 twins



1 Bar Lounge



Restaurant
L'Oursinade



1 Fitness



1 Terrasse



2000 m² d'espaces de
convention

ENJOY YOUR EXPERIENCE!

LOBBY



BAR LOUNGE

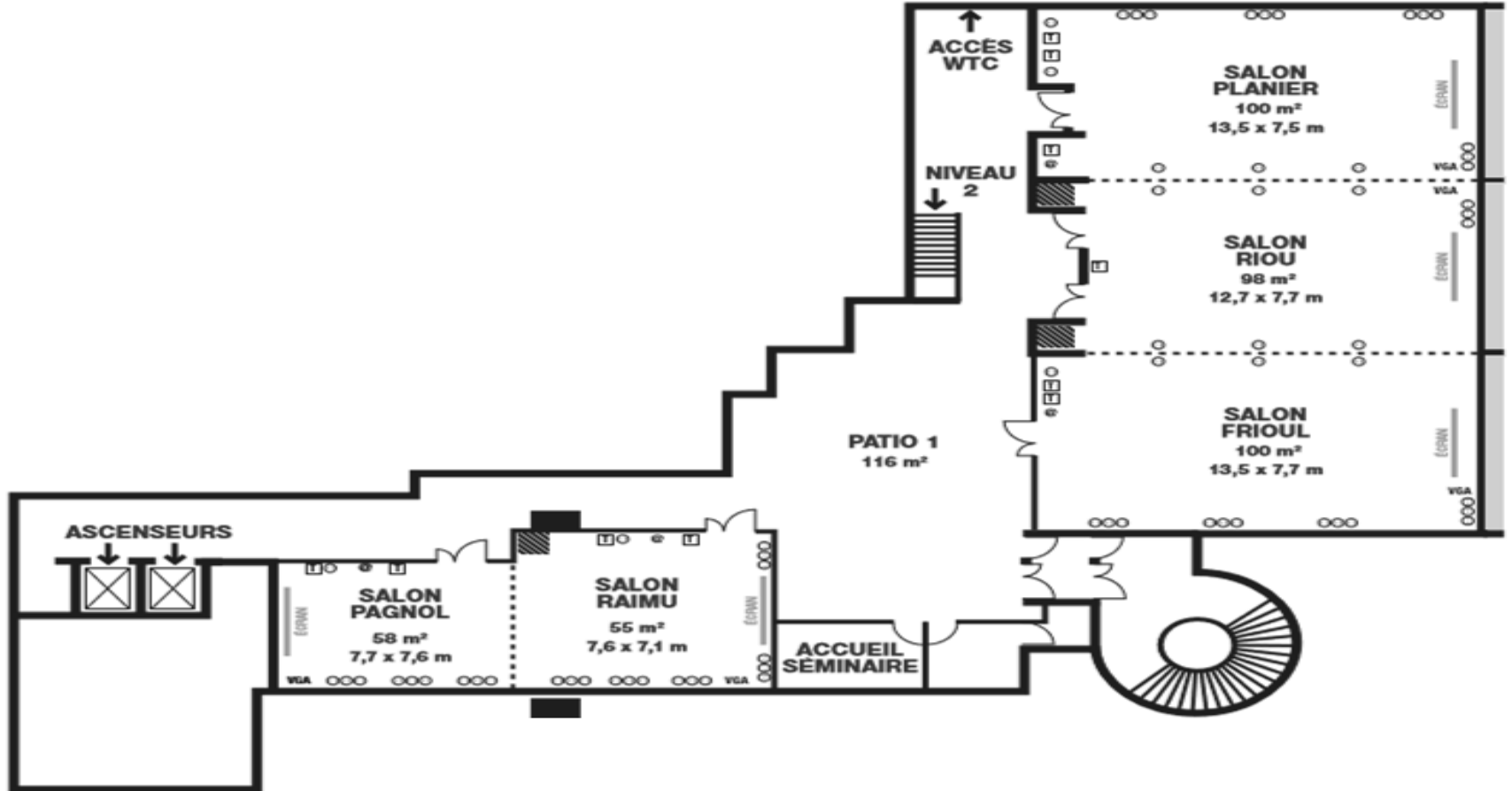


EXPERIENCE CULINAIRE
AUX TOUCHES PROVENCALES



NIVEAU 1

MERCURE MARSEILLE CENTRE VIEUX PORT



FRIOUL – 100M2

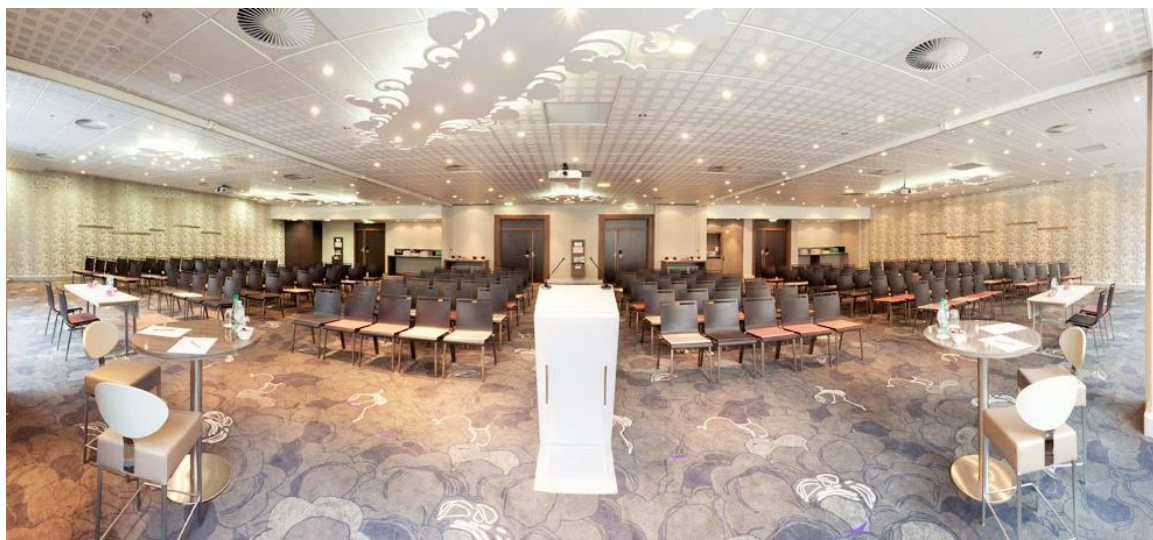
RIOU – 98M2



PLANIER – 100M2

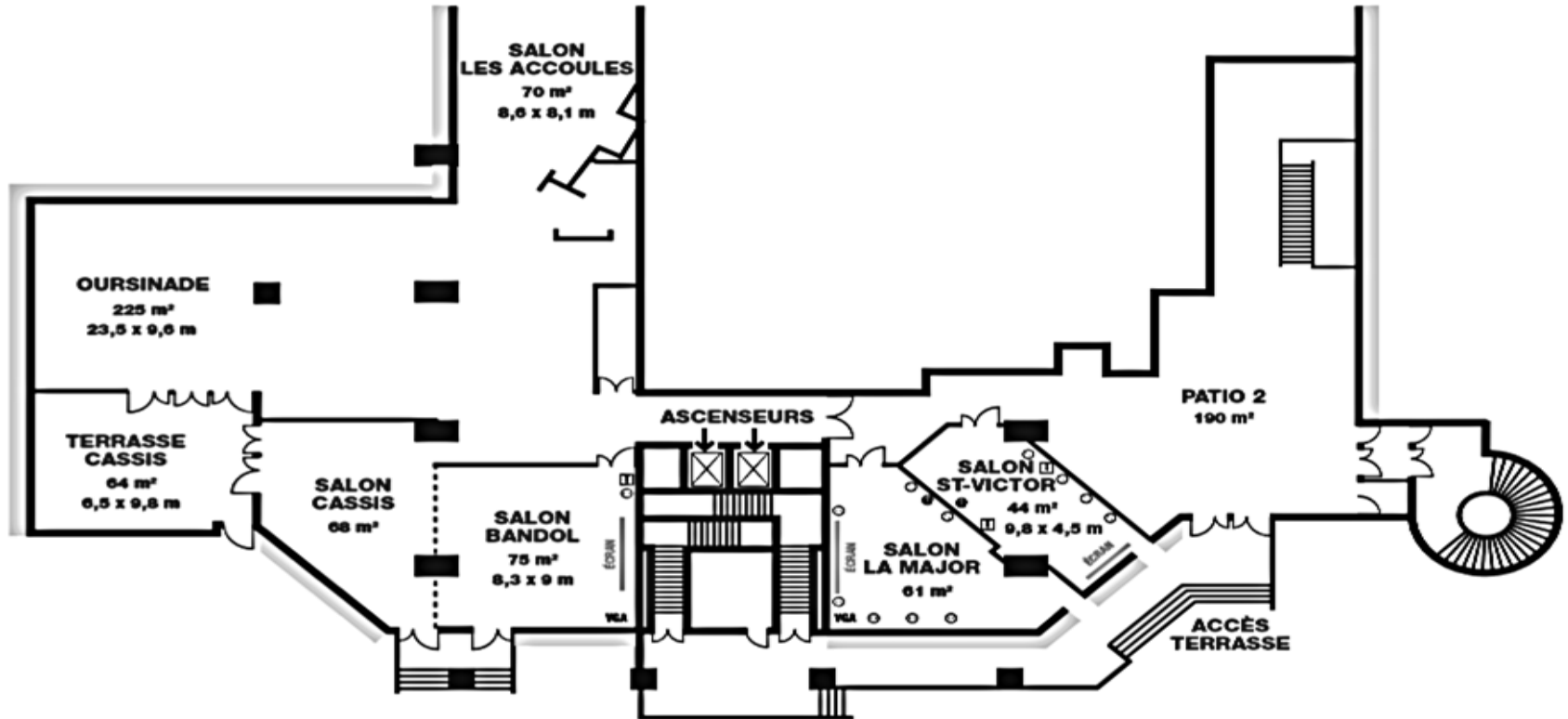


MEDITERRANNE – 300M2
(SALONS FRIOUL + RIOU + PLANIER)



NIVEAU 2

MERCURE MARSEILLE CENTRE VIEUX PORT



RESTAURANT

L'OURSINADE
130 places assises



LA MAJOR – 61M2

ST VICTOR – 44M2



PATIO 2 – 190 M2

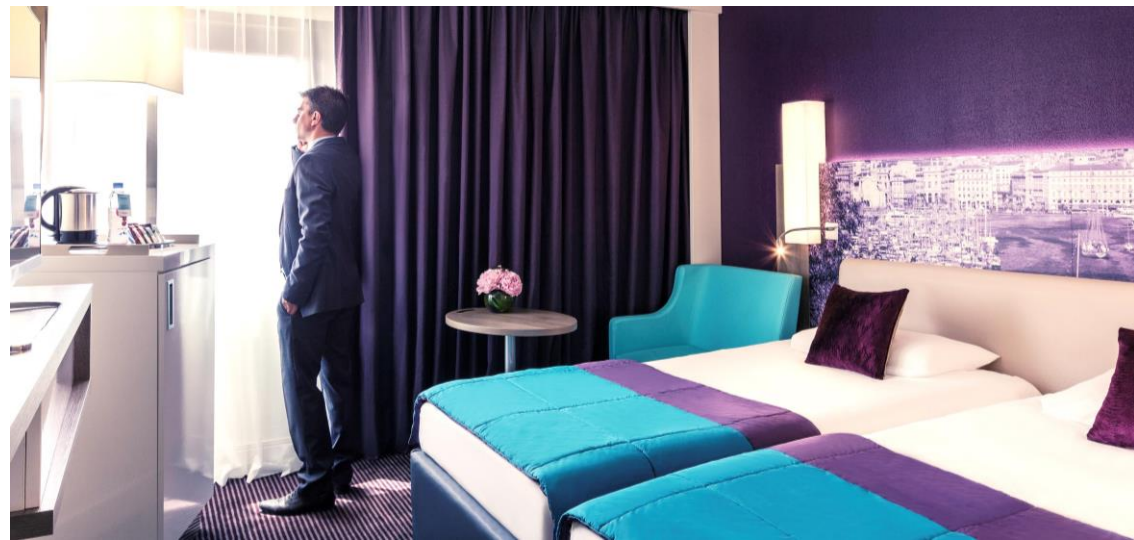
L'ESPACE DE PAUSES



100 CLASSIQUES
22M2 – LIT DOUBLE



32 TWINS
22M2 – LIT SIMPLE



36 SUPERIEURES
25M2 – CONVERTIBLES EN TWINS



32 PRIVILEGES
30M2 – LIT DOUBLE





MERCURE MARSEILLE CENTRE VIEUX PORT
1, RUE NEUVE SAINT MARTIN
13001 MARSEILLE



SEE YOU SOON!